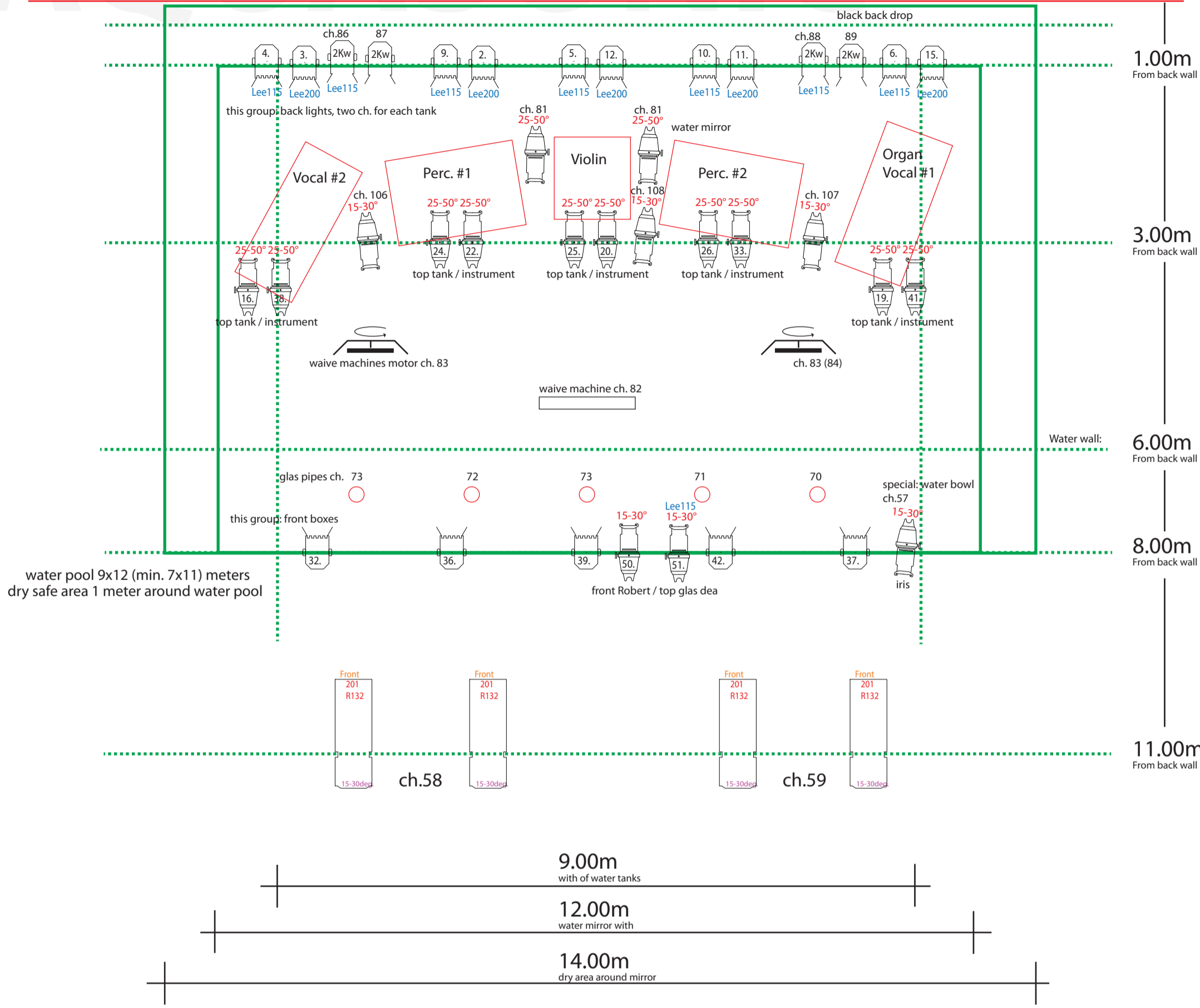



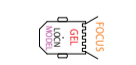



AQUASONIC



- Armatur:**
-  4x 1 kw. Profil 15°-30°
 -  12 x S4. Profil 25°-50°
 -  6 x S4. Profil 15°-30°
 -  15 x 1-2kw. Fresnel
 -  4x 1-2kw. Fresnel
 - 48 x 2,4 kw dæmper
- Optional:
Hazer MDG or similar

House lights
ch. 46-48, 61-63, 97-100

AQUASONIC Light Plan

Adalsteinn Stefansson
03.04.2017
t: 00354 6968287
e: rafalli@hotmail.com